

Appendix 8.5 Plates 1-16

Appendix 8.5

Plates 8.1-8.16



Plate 8.1: Proposed substation site at Coolnabacky. Improved agricultural grassland is the dominant habitat present onsite.



Plate 8.2: Watercourse and associated hedgerow which occurs along the North-western and Northern boundary of the Coolnabacky substation site.



Plate 8.3: Arable crops were abundant in the northern part of the study area and along the existing Athy – Portlaoise line route.



Plate 8.4: Site of proposed Ballyragget substation (foreground). The existing 38 kV substation is located adjacent to the proposed site (background).



Plate 8.5: Conifer Woodland occurs in the central part of the proposed Ballyragget to Coolnaback 110 kV line route. The habitat is managed for commercial forestry and is dominated by Sitka Spruce (*Picea sitchensis*).



Plate 8.6: Isolated pockets of wet grassland were occasionally encountered along the proposed Ballyragget to Coolnaback 110 kV line route. Soft Rush (*Juncus effusus*) and Jointed Rush (*Juncus articulatus*) were the dominant species recorded throughout this habitat.



Plate 8.7: The proposed Coolnaback to Ballyragget 110kV line route crosses the River Barrow and River Nore SAC at Boleybeg.



Plate 8.8: The hedgerows that occur along proposed Ballyragget – Coolnaback 110 kV line routes vary in character depending on management.



Plate 8.9: Wet grassland, mature treelines at Boleybeg.



Plate 8.10: Oak-ash-hazel woodland (WN2) occurs at a single location (Boleybawn) along the proposed 110 kV line route from Ballyragget to Coolnabacky. Upland eroding streams that feed into the Owenbeg River just downstream occur within the woodland area.



Plate 8.11: The hedgerows encountered along the existing Ballyragget to Kilkenny 110 kV line were characterised by relatively small structures often comprising Hawthorn (*Crataegus monogyna*) and Elder (*Sambucus nigra*). Drainage features were mostly absent along these hedgerows.



Plate 8.12: Arable crops were frequent in the northern parts of the Ballyragget - Kilkenny 110 kV line route. Barley and Wheat were the main crops associated with this type of habitat.



Plate 8.13: Wet grassland was encountered at a single location along the existing Ballyragget - Kilkenny 110kV line route.



Plate 8.14: View of existing Ballyragget to Kilkenny line (Structure BK49) at the crossing of the River Dinin at Mohil.

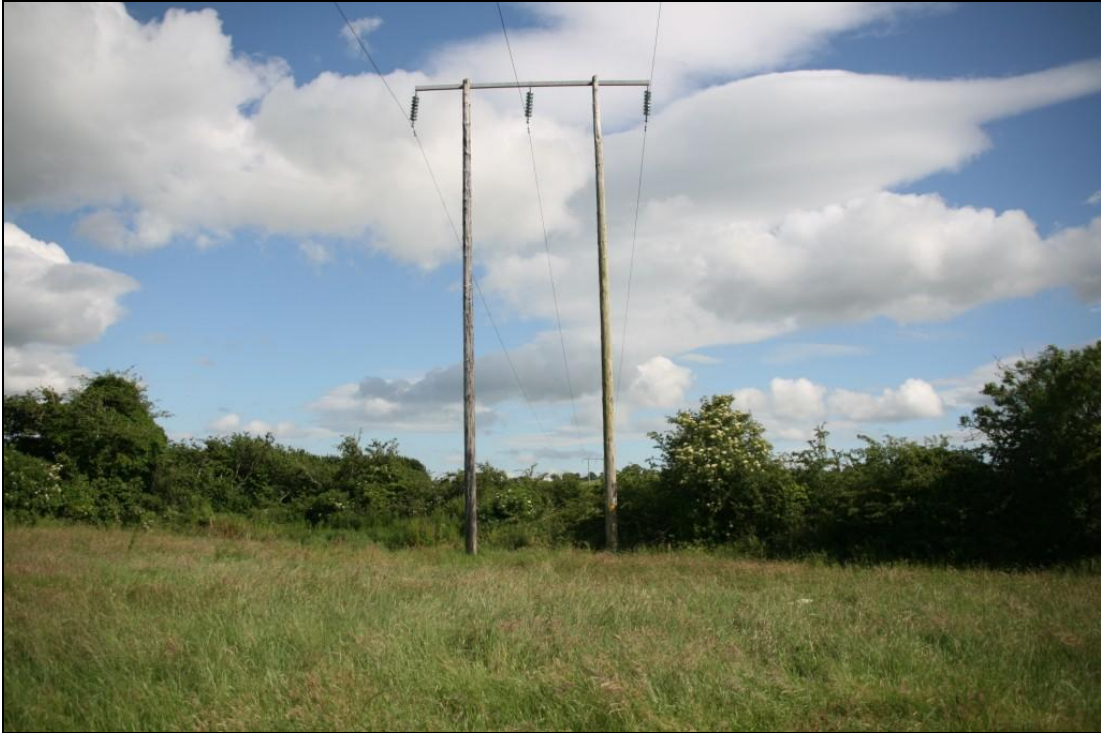


Plate 8.15: View of existing Ballyragget to Kilkenny line adjacent to River Barrow and Nore SAC at Gragara (Structure BK48). Hawthorn scrub occurs on a south facing slope within the SAC (background).



Plate 8.16: View of existing substation at Scart, Co. Kilkenny.