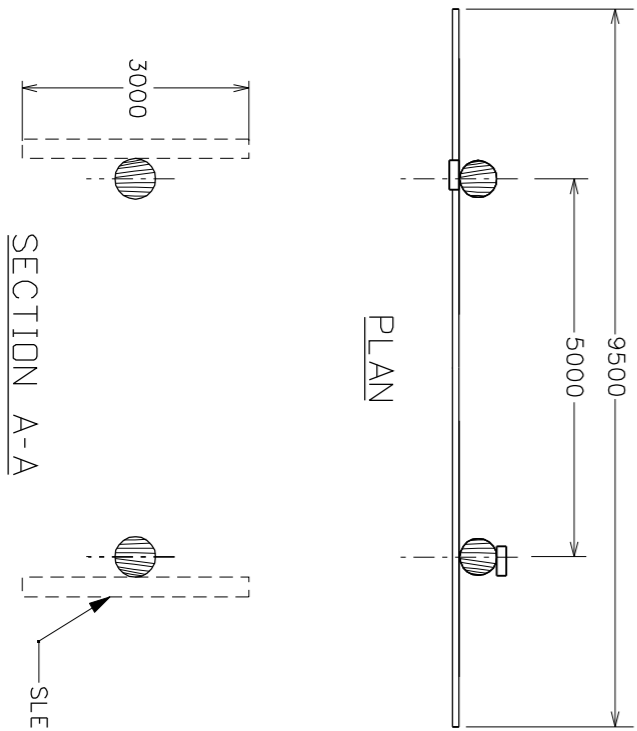
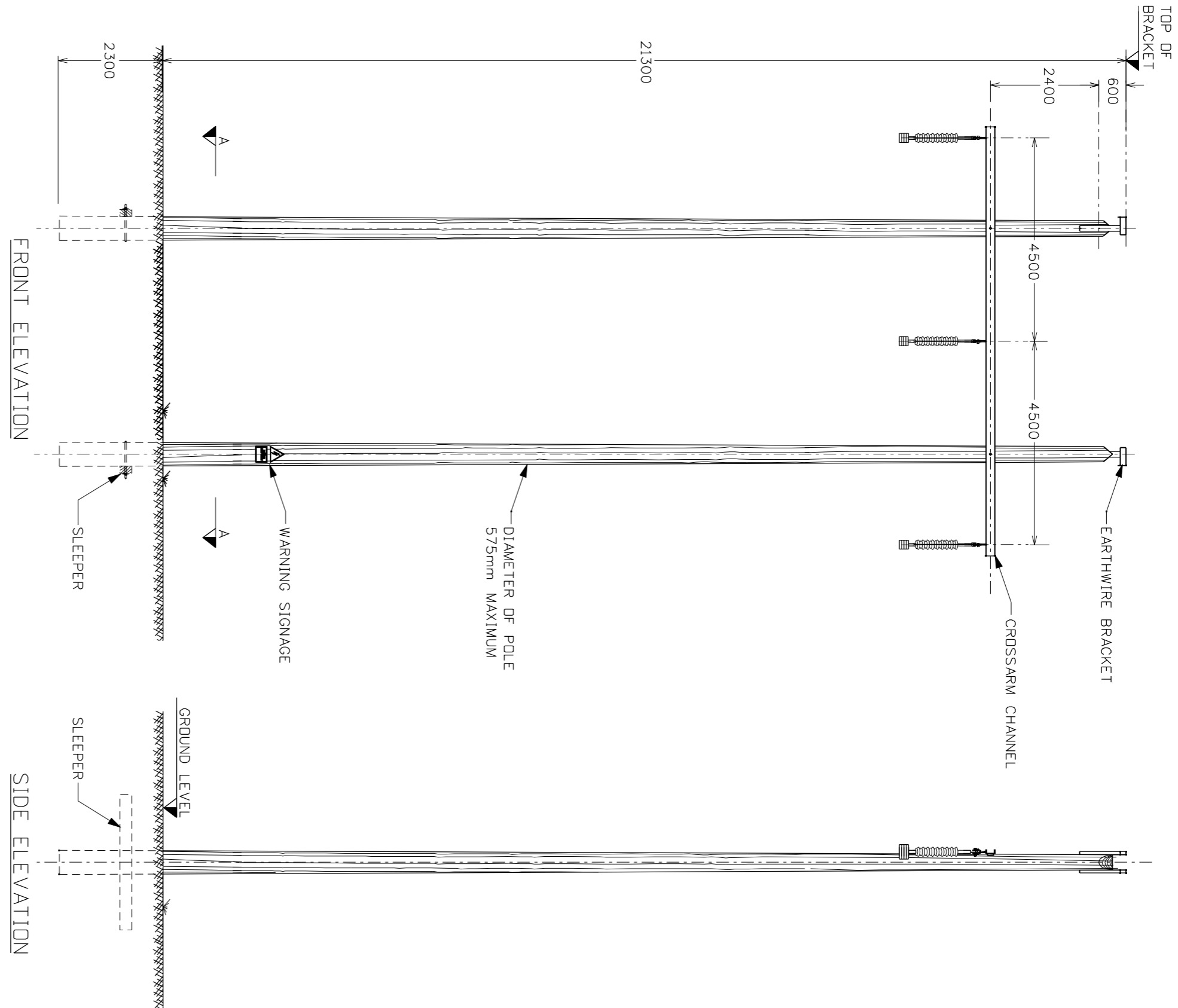


A B C D E



SECTION A-A

SLEEPER



NOTES:

ALL DIMENSIONS ARE IN MILLIMETRES UNLESS OTHERWISE STATED.  
 REFERENCE CONSTRUCTION DRAWING NUMBER PG567-D04-123-001 (TC196833)  
 FOR VERY LONG SPANS, 2 CROSSARMS MAY BE USED - ONE ON EACH SIDE OF POLES

Rev	Revision Description

Purpose of issue - Preliminary unless indicated  
 Tender  Client Approval  Construction  As-built  Revised

**ESB International**  
 ESBI Energy Innovation

ESBI Engineering Solutions, Stephen Court, 18-21 St. Stephen's Green, Dublin 2, Ireland. Tel: (0)1 703 8000 Fax: +353 (0)1 703 7188  
 Email: marketing@esbi.ie Web: www.esbi.ie

ESBI Engineering Solutions is a trading name of ESBI Engineering & Facility Management Limited.  
 Registered Office: as above Registered in Ireland No. 156249

Client	ESB NETWORKS
Project	Materials
Contract	

Production Unit	High Voltage Engineering
Drawing Title	110kV LINES PLANNING OUTLINE DRAWING SUSPENSION WOOD POLESET EARTHWIRE

Copyright ESB International Ltd All rights reserved. No part of this work may be modified or reproduced or copied in any form or by any means - graphic, electronic or mechanical, including photocopying, recording, taping or information-and-retrieval system, or used for any purpose other than its designated purpose, without the written permission of ESB International Ltd.

Drawn	Produced	Verified	Approved	Approved date
A.King	P.Ennis	F.Ahmad	P.Ennis	09/02/12
Client Ref			No. of Shts	Size
TC206668			-	A3
Drawing Number			Scale	
PG567-D004-484-001-000			1/100	

SHEET REV